

LEARNING CHINESE IN TAIWAN

學華語到臺灣



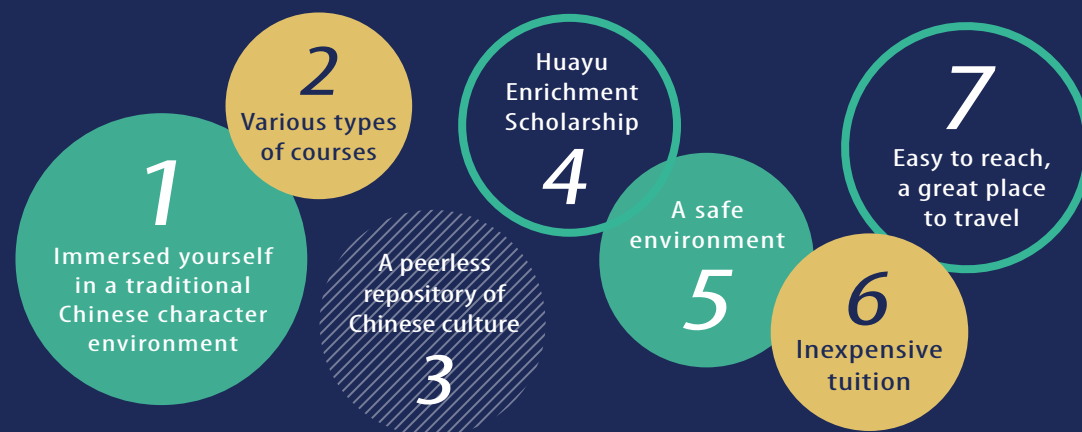
WHY TAIWAN?

Why Taiwan?

Taiwan is an ideal place for international students looking to learn Mandarin Chinese (also called Mandarin, Huayu, Guoyu, Hanyu, Putonghua, Zhongwen, and Modern Standard Chinese). Taiwan is also an ideal place to learn to read and write Chinese characters, allowing you to communicate effectively with people who speak other Chinese dialects. Taiwan still uses traditional character forms, which are essential for any future translator, and allow you to more fully appreciate the Chinese language across the centuries.

Colleges and universities throughout Taiwan offer Mandarin Chinese instruction in a wide range of course offerings to suit all ages, interests and study aims. The instruction and teaching materials are top-notch and designed to help students achieve their language learning goals. Outside of class, students have rich opportunities to practice reading Chinese characters and speaking Mandarin with the friendly people of Taiwan. Comprehensive Chinese language instruction will give you a well-grounded understanding of the language and strong communication skills. Lessons are well-planned to suit the needs of each learner whether you're learning for further study, work, travel, or pleasure.

7 reasons for learning Mandarin Chinese in Taiwan



TUITION

Regular Course	Intensive Course	Customized Course
Total Hours: 150 hrs+	Total Hours: 40-180 hrs	Total Hours: Flexible, based on individual needs.
TWD15,000-45,000 (USD485-1,450)	TWD16,000-68,000 (USD515-2,200)	TWD460-1,200 per hour (USD15-40)

Mandarin Chinese Language Centers in Taiwan provide various types of courses at various tuition levels. The above is a brief summary of tuition fees.

Class Level

This chart provides a brief summary of various class levels in terms of the amount of active vocabulary used. Upon enrollment, your school will conduct a placement test to make sure you start at the right level.

Class Levels	Vocabulary Base
Basic	0~1000
Intermediate	1000~2500
High-Intermediate	2500~5000
Advanced	8000+

Huayu (Mandarin) Enrichment Scholarship

The Ministry of Education (MOE) offers a Huayu (Mandarin) Enrichment Scholarship (MOE HES) to encourage international students to take Huayu (Mandarin) courses in the Republic of China (Taiwan) as a way to promote international understanding of Taiwanese culture and society. For more information, updates and useful links, please visit the Huayu Enrichment Scholarship website at <https://taiwanscholarship.moe.gov.tw>

Application Period February 1 to March 31 (subject to change)	<ul style="list-style-type: none"> ▶ Duration: Summer term (June/July or July/August), along with short-term classes lasting 3, 6, 9 or 12 months. ▶ Monthly stipend: NTD25,000
--	---

TEST OF CHINESE AS A FOREIGN LANGUAGE (TOCFL)

Test of Chinese as a Foreign Language (TOCFL)

The Test of Chinese as a Foreign Language (TOCFL) is a set of standardized language proficiency tests developed for non-native speakers of Chinese. TOCFL is divided into four sub-tests for listening, reading, speaking, and writing. Based on the CEFR standards, the speaking and writing test are divided into 3 Bands (A, B and C) and each Band is further divided into 2 levels for a total of 6 levels. In the listening and reading tests, the Steering Committee for the Test Of Proficiency - Huayu (SC-TOP) developed an entrance level Novice Band for beginners.

Target Test Taker

TOCFL is a foreign language proficiency test for non-native speakers of Chinese designed to help you assess your Chinese proficiency for study, work, or travel in Chinese-speaking contexts. Test-takers can choose a level that best suits their current Chinese language proficiency and learning background for each required skill.

Levels		Indicative Course Hours		Suitable Vocabulary Base
		In Chinese-speaking areas	In non-Chinese-speaking areas	
Band Novice		30-120 hours	60-240 hours	300
Band A	Level 1	120-240 hours	240-480 hours	500
	Level 2	240-360 hours	480-720 hours	1,000
Band B	Level 3	360-480 hours	720-960 hours	2,500
	Level 4	480-960 hours	960-1,920 hours	5,000
Band C	Level 5	960-1,920 hours	1,920-3,840 hours	8,000
	Level 6	More than 1,920 hours	More than 3,840 hours	

Vocabulary list for each level can be found online at <https://www.sc-top.org.tw/download/8000zhuyin.zip>

Chinese Language Education Resources

► Office of Global Mandarin Education

The Office of Global Mandarin Education website provides an authoritative and comprehensive list of Mandarin Chinese learning resources in Taiwan. There's sure to be a perfect match to your specific needs.

<https://ogme.edu.tw/>



► Find a Chinese Language Center

You can read details of all the Chinese language centers and their programs.

https://ogme.edu.tw/Home/tw_school_list



On-Line Learning

Flexible, convenient, free resources for independent language learning:

► Huayu 101

https://ogme.edu.tw/Home/tw_101_list



► Novice learner

<https://www.coursera.org/learn/learn-chinese-mandarin>



► Intermediate Chinese

<https://zh-tw.coursera.org/learn/learn-intermediate-chinese-mandarin>



CHINESE LEARNING CENTERS IN TAIWAN

Mandarin Chinese Language Centers in Taiwan



North

A. Taipei

- 1 China University of Science and Technology**
Language Center
▶ language@www.cust.edu.tw
▶ <https://goo.gl/4ZasRa>
- 2 Chinese Culture University**
Mandarin Learning Center
▶ mlc@sce.pccu.edu.tw
▶ <https://goo.gl/C6o9ao>
- 3 Ming Chuang University**
Mandarin Studies & Culture Center
▶ msc@mail.mcu.edu.tw
▶ <https://goo.gl/oPSHf2>
- 4 National Chengchi University**
Chinese Language Center
▶ mandarin@nccu.edu.tw
▶ <https://goo.gl/FEA51w>
- 5 National Taipei University of Education**
Chinese Language Education Center
▶ clec@tea.ntue.edu.tw
▶ <https://goo.gl/uoGzTE>
- 6 National Taipei University of Technology**
Chinese Language Training Center
▶ cltc@mail.ntut.edu.tw
▶ <https://tinyurl.com/y5ldpaya>

- 7 National Taiwan College of Performing Arts**
Chinese Language Education Center
▶ bennieyy@tcpa.edu.tw
▶ <https://goo.gl/XqEVdZ>
- 8 National Taiwan Normal University**
Mandarin Training Center
▶ mtc@mtc.ntnu.edu.tw
▶ <https://goo.gl/PnyLGS>
- 9 National Taiwan University**
Chinese Language Division,
Language Center
▶ Cld222@ntu.edu.tw
▶ <https://goo.gl/e3sYZY>
- 10 National Taiwan University**
International Chinese Language
Program
▶ iclp@ntu.edu.tw
▶ <https://goo.gl/oTBPBB>
- 11 Shih Chien University**
Chinese Language Center
▶ Chinese@g2.usc.edu.tw
▶ <https://goo.gl/C3bsQn>
- 12 Shih Hsin University**
Center for Teaching Chinese as a
Second Language
▶ ctcs@shu.edu.tw
▶ <https://goo.gl/fQPtwC>

CHINESE LEARNING CENTERS IN TAIWAN

- 13 Soochow University**
Chinese Language Center
▶ mandarin@scu.edu.tw
▶ <https://tinyurl.com/y34bzm7k>
- 14 Taipei City University of Science and Technology**
Mandarin Chinese Language Center
▶ flagvisa@yahoo.com.tw
▶ <https://tinyurl.com/wm9zhcw>
- 15 Tamkang University**
Chinese Language Center
▶ clc@clc.tku.edu.tw
▶ <https://goo.gl/u2YLu3>

B. NEW TAIPEI CITY

- 16 Fu Jen Catholic University**
Center of Chinese Language and Culture
▶ flcg1013@mail.fju.edu.tw
▶ <https://goo.gl/FwKqv9>

C. KEELUNG

- 17 National Taiwan Ocean University**
Chinese Language Center
▶ ntouclc@gmail.com
▶ <https://goo.gl/fNJjmn>

D. TAOYUAN

- 18 Chung Yuan Christian University**
Mandarin Learning Center
▶ cmlcyu@cycu.edu.tw
▶ <https://goo.gl/uHmrEN>

- 19 Kainan University**
Chinese Learning Center
▶ mandarin@mail.knu.edu.tw
▶ <https://goo.gl/XpS4Ph>
- 20 Lunghwa University of Science and Technology**
Chinese Language Center
▶ wclien@mail.lhu.edu.tw
▶ <https://goo.gl/8i3ngL>
- 21 Nanya Institute of Technology**
International Language Center
▶ ylchuang@nanya.edu.tw
▶ <https://tinyurl.com/y2ao458x>

- 22 National Central University**
Chinese Language Program, Language Center
▶ ncu3802@ncu.edu.tw
▶ <https://tinyurl.com/y53hhyll>

- 23 Vanung University**
Chinese Language Center
▶ clc@cip.vnu.edu.tw
▶ <https://bit.ly/2Tw2wlb>

- 24 National Taiwan Sport University**
Chinese Language Center
▶ ntsu-gec@ntsu.edu.tw
▶ <https://tinyurl.com/y2adf6gn>

E. HSINCHU

- 25 Chung Hua University**
Chinese Language Center
▶ international@chu.edu.tw
▶ <https://bit.ly/3abdPoF>

- 26 Minghsin University of Science and Technology**
Chinese Language Teaching Center
▶ mandarin@must.edu.tw
▶ <https://goo.gl/vwDcsb>

- 27 National Chiao Tung University**
Language Teaching and Research Center
▶ mandarin@cc.nctu.edu.tw
▶ <https://goo.gl/6vzpTM>

- 28 National Tsing Hua University**
Chinese Language Center
▶ clc@my.nthu.edu.tw
▶ <https://goo.gl/gB5RSR>

F. MIAOLI

- 29 National United University**
Chinese Language Center
▶ clc@nuu.edu.tw
▶ <https://goo.gl/YkTnUv>

Central

G. TAICHUNG

- 30 Asia University**
Chinese Language Center
▶ yuchenchien@gm.asia.edu.tw
▶ <https://reurl.cc/rIW5D1>

- 31 Chaoyang University of Technology**
Chinese Learning Center
▶ cl@cyut.edu.tw
▶ <https://goo.gl/zQ7H4n>

- 32 Feng Chia University**
Chinese Language Center
▶ clc@fcu.edu.tw
▶ <https://goo.gl/oLZaiH>

- 33 National Chin-Yi University of Technology**
Language Center
▶ tsuyoshi@ncut.edu.tw
▶ <https://goo.gl/oAuAo6>

- 34 National Chung Hsing University**
Chinese Program, Language Center
▶ chinesenchu@gmail.com
▶ <https://goo.gl/rPefYU>

- 35 National Taichung University of Education**
Chinese Language Center
▶ clc@mail.nctu.edu.tw
▶ <https://goo.gl/D4KTUF>

- 36 Providence University**
Chinese Language Education Center
▶ clhuang@pu.edu.tw
▶ <https://goo.gl/wZp4R5>

- 37 Tunghai University**
Chinese Language Center
▶ clc@thu.edu.tw
▶ <https://goo.gl/X1bzsW>

CHINESE LEARNING CENTERS IN TAIWAN

H.CHANGHUA

- 38** **Mingdao University**
Chinese Language Center
▶ serena@mdu.edu.tw
▶ <https://goo.gl/BUAuHH>
- 39** **Chienkuo Technology University**
CTU Language Center
▶ lc@ctu.edu.tw
▶ <https://goo.gl/rBovEu>
- 40** **National Changhua University of Education**
Language Center
▶ lc@cc2.ncue.edu.tw
▶ <https://tinyurl.com/y5t3bvw6>

I.NANTOU / J.YUNLIN

- 41** **National Yunlin University of Science and Technology**
YunTech Language Center
▶ kanghc@yuntech.edu.tw
▶ <https://goo.gl/1TjiQy>

South

K.CHIAYI

- 42** **Nanhua University**
Chinese Language Center
▶ nhu-clc@nhu.edu.tw
▶ <https://goo.gl/Es6Lhs>

- 43** **National Chiayi University**
Language Center
▶ cslncyu@mail.ncyu.edu.tw
▶ <https://goo.gl/xydV45>

L.TAINAN

- 44** **Chang Jung Christian University**
Chinese Language & Culture Center
▶ clcc@mail.cjcu.edu.tw
▶ <https://goo.gl/MDWz1S>
- 45** **Kun Shan University**
Chinese Language Center
▶ lcc@mail.ksu.edu.tw
▶ <https://goo.gl/ZRSkGe>

- 46** **National Cheng Kung University**
College of Liberal Arts, Chinese Language Center
▶ Em52040@mail.ncku.edu.tw
▶ <https://goo.gl/pB2e3f>

- 47** **Southern Taiwan University of Science and Technology**
Chinese Language Center
▶ dept_chilance@stust.edu.tw
▶ <https://goo.gl/hVafRk>

- 48** **Taiwan Shoufu University**
Chinese Language Center
▶ chineselc@tsu.edu.tw
▶ <https://tinyurl.com/y32ly33k>

M.KAOHSIUNG

- 49** **I-Shou University**
Chinese Language Center
▶ oia@isu.edu.tw
▶ <https://reurl.cc/VaVLL6>
- 50** **Kao Yuan University**
Chinese Language Center
▶ clc@cc.kyu.edu.tw
▶ <https://goo.gl/YHQEs6>
- 51** **National Kaohsiung Normal University**
Center of Language and Culture Teaching
▶ clcts213@gmail.com
▶ <https://goo.gl/v3ZttV>
- 52** **National Sun Yat-sen University**
Chinese Language Center
▶ alfc@mail.nsysu.edu.tw
▶ <https://tinyurl.com/yy3mak8l>
- 53** **National University of Kaohsiung**
Division of Chinese Language, Language Center
▶ clc@nuk.edu.tw
▶ <https://goo.gl/UsoG3e>
- 54** **Shu-Te University**
International Teaching and Language Center
▶ wanjing@stu.edu.tw
▶ <https://goo.gl/CU3PKn>
- 55** **Wenzao Ursuline University of Language**
Chinese Language Center
▶ clc@mail.wzu.edu.tw
▶ <https://goo.gl/WMz63R>

N.PINGTUNG

- 56** **National Pingtung University**
Language Center, Chinese Language Division
▶ Ice@mail.nptu.edu.tw
▶ <https://goo.gl/Kpi8CQ>
- 57** **National Pingtung University of Science and Technology**
Chinese Language Center
▶ clc@mail.npust.edu.tw
▶ <https://goo.gl/JR43eB>

East

O.YILAN

- 58** **Fo Guang University**
Chinese Language Instruction Center
▶ clic@mail.fgu.edu.tw
▶ <https://tinyurl.com/yytptkrz>

P.HUALIEN

- 59** **National Dong Hwa University**
Chinese Language Center
▶ clcndhu@mail.ndhu.edu.tw
▶ <https://clc.ndhu.edu.tw/>
- 60** **Tzu Chi University**
Chinese Language Center
▶ cltc@mail.tcu.edu.tw
▶ <https://tinyurl.com/pz88kml>

Q.TAITUNG

- 61** **National Taitung University**
Chinese Language Teaching and Study Center
▶ nttucltsc@gm.nttu.edu.tw
▶ <https://goo.gl/abmwGa>



**Foundation for
International Cooperarion
in Higher Education
of Taiwan (FICHET)**

Room 202, No. 5, Lane 199, Kinghua Street
Taipei City, Taiwan 10650, R.O.C.
Website: www.fichet.org.tw
Tel: +886-2-23222280
Fax: +886-2-23222528



**Ministry of Education,
R.O.C.**

No. 5, Zhongshan South Road
Taipei City, Taiwan 10051, R.O.C
Website: www.edu.tw



Study in
Taiwan 
www.studyintaiwan.org

再見 Hello
你好 Zài Jiàn
Goodbye 謝謝不客氣
Thankyou
Xiè Xiè